



Cover Removal. Remove the 2 screws pull forward and lift up. These screws are specific to this location. They are designed to bite through the paint to provide an earth bond to the cover. All other screws are of the same type.



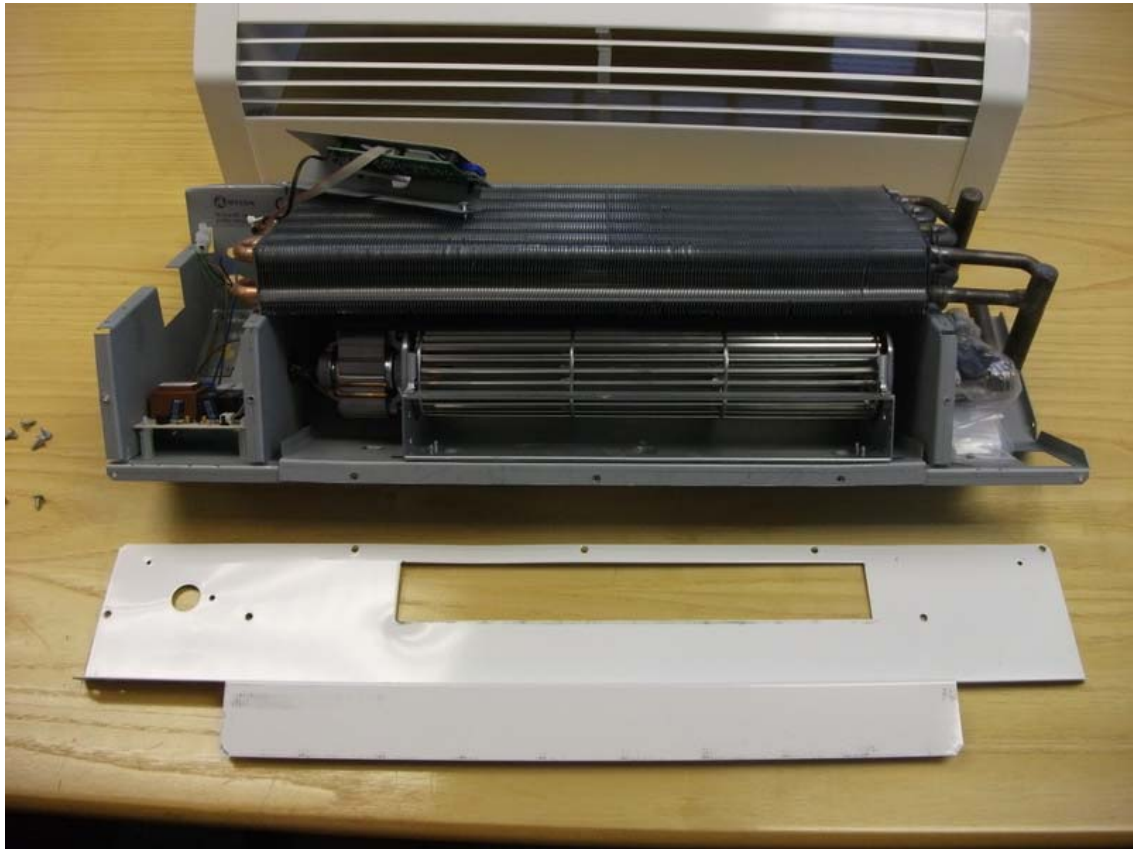
Cover removed. At this point replacement of the control board is possible. The power boards can be replaced but it can be a bit tricky.



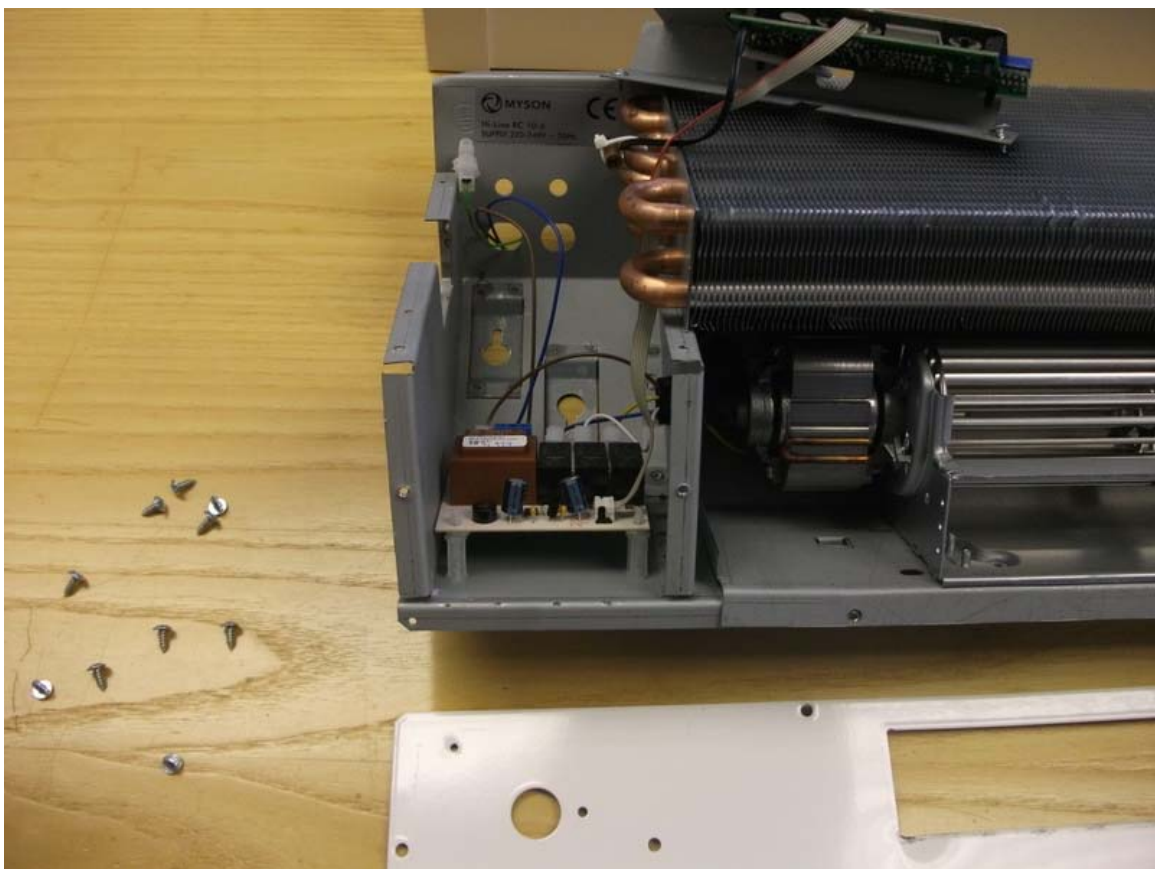
Control internals.



2 Screws retaining the control panel



Baffle removal. Remove all screws and lift off. All parts are now easily serviceable.



Control details power board can be removed from the support pins. Long nose pliers may be needed to pinch the pins on the supports.



Motor tabs. Bend up slightly to release. The motor will lift out complete with the mounting plate.





Heat exchanger retaining screw. One either end .

