



An electric radiant heating roll constructed of a heating wire attached to a fiberglass mesh. The wire is preconfigured to 2" spacing to provide consistent and predictable warmth at 15 watts per square foot. Heating rolls are available in both 120V and 240V sizes up to 213 square feet for a single mat. Multiple mats can be installed on a single control. This product can be used under any flooring but is most commonly installed under tile and stone floors.

**GENERAL INFORMATION**

1. TempZone by WarmlyYours is an electric radiant floor heating system designed to warm tile and stone floors.
2. TempZone by WarmlyYours is specified in areas where zone warming increases the energy efficiency of the living space such as bathrooms, kitchens, family rooms, entryways, mudrooms and laundry areas.
3. TempZone by WarmlyYours has a 10 year warranty that covers the cost of repair as well as the product.
4. After receiving a floorplan, WarmlyYours will provide a custom design layout with specific electrical specs overnight.

**PRODUCT APPROVALS:**

UL and C-UL listed.

**MAT SPECIFICATIONS**

1. Tempzone by WarmlyYours is manufactured in 120V and 240V.
2. All standard mats can be customized on site, as long as the entire mat is used.
3. The smallest mat available covers 10.5 square feet. Any size above that can be accommodated by either one or two standard mats
4. Tempzone by WarmlyYours is manufactured to produce 15 watts per square foot or 51 BTU per sq. ft. The consistent 2" wire spacing reduces site irregularities in heat eliminates cold spots, and allows for great flexibility in floorplan design
5. TempZone by WarmlyYours is water resistant and has a true 1/8" profile.
6. The fiberglass mesh that the wire is sewn to helps flatten the roll and ensures even heat and consistent spacing of the wires.

**HEATING WIRE CONSTRUCTION:**

Resistive wire of copper-nickel alloy construction insulated with Teflon coating of 1/32" thickness. Metal braided ground sheath covers the inner Teflon insulation and is coated with a second layer of Teflon at 1/32" thickness. Total thickness of wire 1/8".

**FLOOR CONTROL**

To increase the zone warming efficiency of TempZone by WarmlyYours specify a floor sensing thermostat that has a:

- Timer
- Controllable temperature
- Four programs per day
- Floor-sensor or thermocouple that ensures the power cycles once it reaches temperature
- Probe wire has a temperature rating of 80 degree C
- Built-in GFCI



**AMBIENT CONTROL**

To increase the room warming efficiency of TempZone by WarmlyYours specify an ambient sensing thermostat with a floor temperature cut-off that has a:

- Timer
- Controllable temperature
- Four programs per day
- Air-sensor or thermocouple that ensures the power cycles once it reaches temperature
- Floor-sensor that will protect against overheating
- Probe wire has a temperature rating of 80 degree C
- Built-in GFCI



**SPECIFYING WARMLYOURS**

Division 9 Finishes - 09600  
Division 16 Electrical

**TECHNICAL SERVICES**

Technical questions, contact WarmlyYours 24/7 at (800) 875 5285, or find us at [www.WarmlyYours.com](http://www.WarmlyYours.com).



**Extra Information for the Architect**

**Why radiant?**

Apart from the obvious benefits of a warm floor, another benefit to radiant heat is being able to keep the ambient temperature lower than a forced-air system. Test studies conducted by ASHRAE have determined that a “comfortable” temperature at the surface of objects or persons is of 70° F. To obtain such a comfort level with a conventional heating system, the air temperature in the room and the objects in the room must be elevated to 75° F.

With radiant heating systems, in order to obtain the same surface temperature of 70° F, the ambient room temperature can be left at 66° F and that of the object at 75° F. This reduces energy costs substantially, since the room only needs to be heated to 66° F instead of 75° F to obtain the same warmth. (ASHRAE 55-1992)

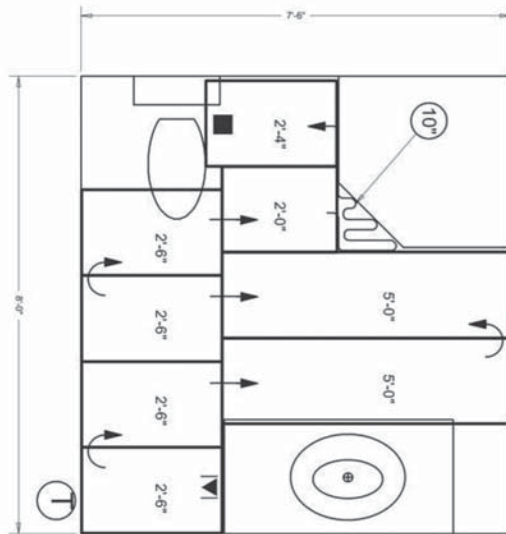
**Contractor Pricing**

All pricing in the information package provided is at retail price. Contractor pricing starts at 15% off the list price (\$8.50 to \$10.20 per square foot). These discounts increase according to our incentive program. For larger jobs (over 1000 sq ft) additional custom discounts can be arranged.”

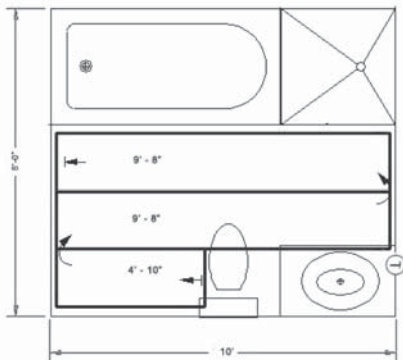
**Overnight Design Layout Service**

WarmlyYours offers the fastest turnaround of layouts and pricing in the industry. For any shaped room, WarmlyYours will complete the design layout and an accurate price quote overnight. Our standard mats also offer consistency in pricing, which means, if rooms change size or shape the architect can easily estimate the new price simply by prorating the square feet.

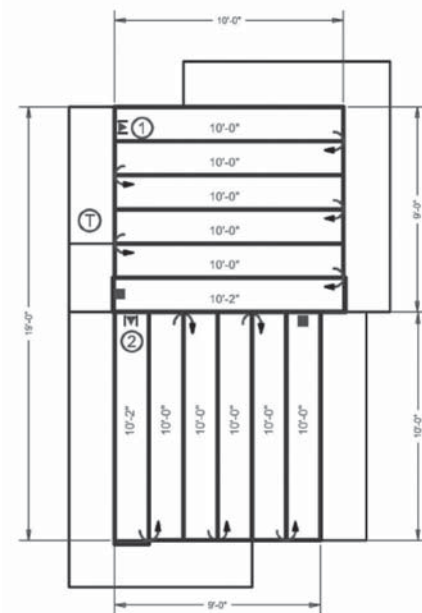
**Sample Custom Installation Plans**



8 ' X 8 ' Bath with Angle Shower  
One Standard Roll



8' X 10' Bath  
One Standard Roll



14' X 23' Kitchen  
Two Standard Rolls

30044  
7/08