

# ***Quick-Start Manual***

## ***Prestopak™***

### ***Primary/Secondary Modules***

*Pre-assembled boiler piping and zoning packages for the Triangle Tube Prestige 110®*



*Includes:*

- Primary/Secondary piping*
- Zone Pumps or Zone Valves*
- Optional Zone Mixing Modules*
- Optional Indirect Water Heater Pump Kit*

### **Precision Hydronic Products**

Division of JL industries, inc.  
6730 NE 79th Court - Portland, OR 97218  
Phone: 503-445-4188; Fax: 503-445-4187  
[www.phpinc.us](http://www.phpinc.us)

©2007

**Precision** [www.phpinc.us](http://www.phpinc.us)



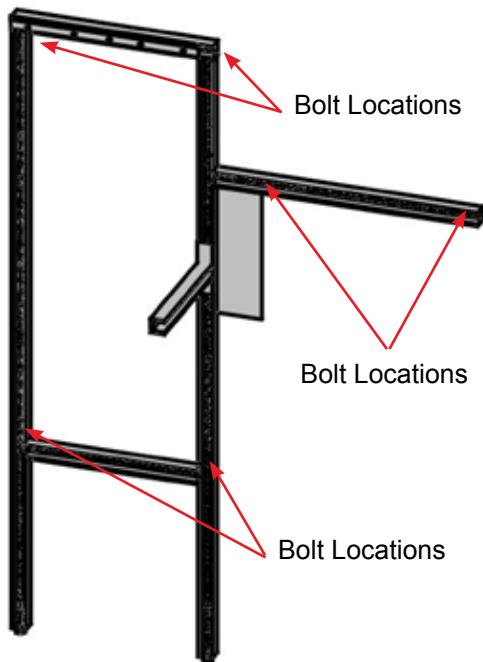
***Hydronics***™



## Triangle Tube Prestige 110® Primary/Secondary Modules

### Step 1:

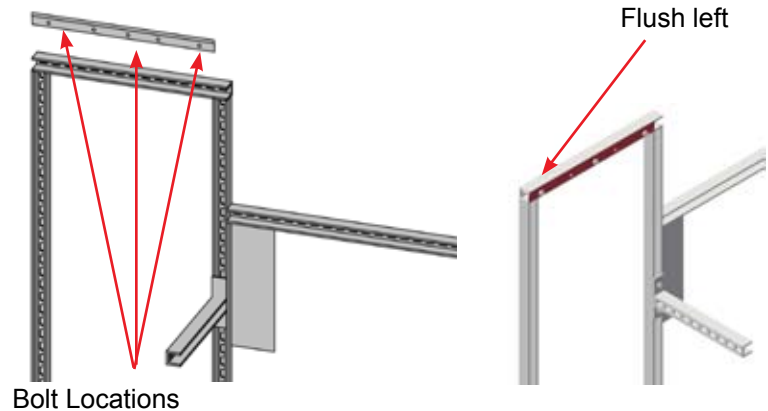
Attach stand to the wall  
 Take into account required codes, venting,  
 hydronic and gas line requirements  
 Use at least six 1-3/4" x 5/16" lag bolts



### Step 2:

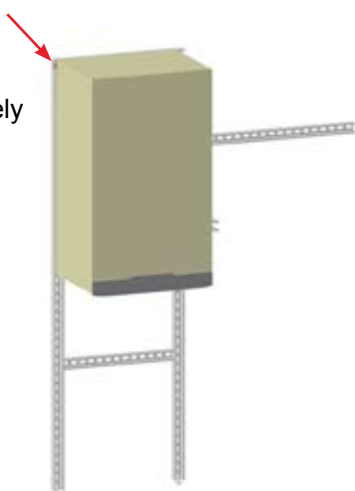
Attach hanging strip supplied with boiler to stand  
 Use 3 strut nuts and Allen screws

Hanging strip should be flush left on top rail of stand



### Step 3:

Place boiler on stand. Using 2 people lift the boiler and place on the stand by dropping the boiler hanging flange on the boiler onto the hanging strip. Make sure the left side of the boiler is aligned flush to the left edge of the stand, and the boiler is securely seated in the hanging strip.



### Step 4:

If you are using the optional DHW pump kit, install it now. Install on the lower rear right port. You will have to unscrew the cap and screw on the straight half union, then attach the pump by means of the other half of the union. Note that the DHW pump support bracket must be mounted on the lower rail of the stand with strut nuts and allen bolts. The swiveling lower flange and inner contact surface should be on TOP of the pump support bracket but the bottom of the bolt should come from BELOW the support bracket. Use 2 provided pump bolts and nuts and the between flange gasket and tighten the assembly in place.



## Triangle Tube Prestige 110® Primary/Secondary Modules

### Step 5:

Install heating supply return half unions. Locate the heating supply and return ports under the boiler. The supply port is on the lower right front of the boiler, the return port is to the left of the DHW supply port in the middle of the lower rear part of the boiler. Remove caps from these ports and screw on the straight half union (provided) to the return port and the 90 degree angle half union to the supply port facing directly forward.

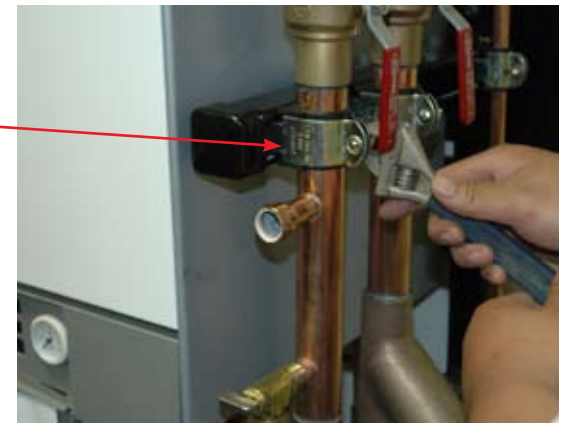
Screw straight half union on return port



Screw 90 degree half union on supply port, make sure it points to the front

### Step 6:

Attach the primary secondary starter piece to the half unions you placed in the last step. It will only fit one way. One person can do this but it is recommended to have a second assisting. The return side has the "Wye" strainer on it. First connect the 2 unions, then use 2 strut clamps (provided) to secure supply and return lines to the primary loop support arm. Do not fully tighten you may need to reposition slightly. The supply and return starter pieces should be vertical and 4" apart on the support arm.



### Step 7:

Attach unions that connect the 2-piece water line from the expansion tank to the bottom of the air separator. Use the strut clamp (provided) to secure the fill line to the frame. Use the union to attach the fill valve to the left of the expansion tank. Note the expansion tank usually ships pre-mounted to the stand. If it is not mounted, put middle rim of tank in middle of groove in holder and secure using the 2 band clamps (provided).



Screw fill valve to union on left side of tank



Connect water line unions



Secure fill water line with strut clamp

## Triangle Tube Prestige 110® Primary/Secondary Modules

### Step 8:

Using the strut bolts attached to the secondary module, slide the zone module onto the stand mounting arm. Use the silicone grease provided to lubricate the o-rings then push the Slip-Fit connections together until the flanges meet. Tighten the allen screws to secure the zone module to the stand.



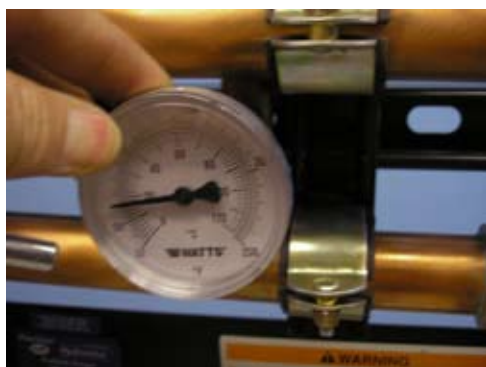
### Step 9:

Install the 2 half-brackets over the Slip-Fit flanges and secure with the stainless steel zip-tie. The zip-tie only needs to be snug in order to hold the brackets in place.



### Step 10:

To complete the Prestopak assembly, install the gauges, zone pumps (if used), and end kits with the purge valves. Secure the Slip-Fit connections as shown above.



## Triangle Tube Prestige 110® Primary/Secondary Modules

The boilerpak secondary zone modules are interchangeable with all boilerpak primary components. They all mount to the various boiler stands in the same manner with the exception of the Ultrapak (see pages 32-33). The secondary zones are available in assemblies up to 5 zones for zone pump and zone valve modules and in assemblies up to 3 zones for mixing modules. Additional modules may be added to achieve the desired number of zones. Pumping modules are available with either Taco 008-F6 or Grundfos UPS 25-58 FC pumps.



Zone Pumps with  
 Grundfos UPS 15-58 FC



Zone Pumps with  
 Taco 008-F6



Zone Valves with  
 Taco EBV



Mixing module with  
 Taco 2-way i-Valve



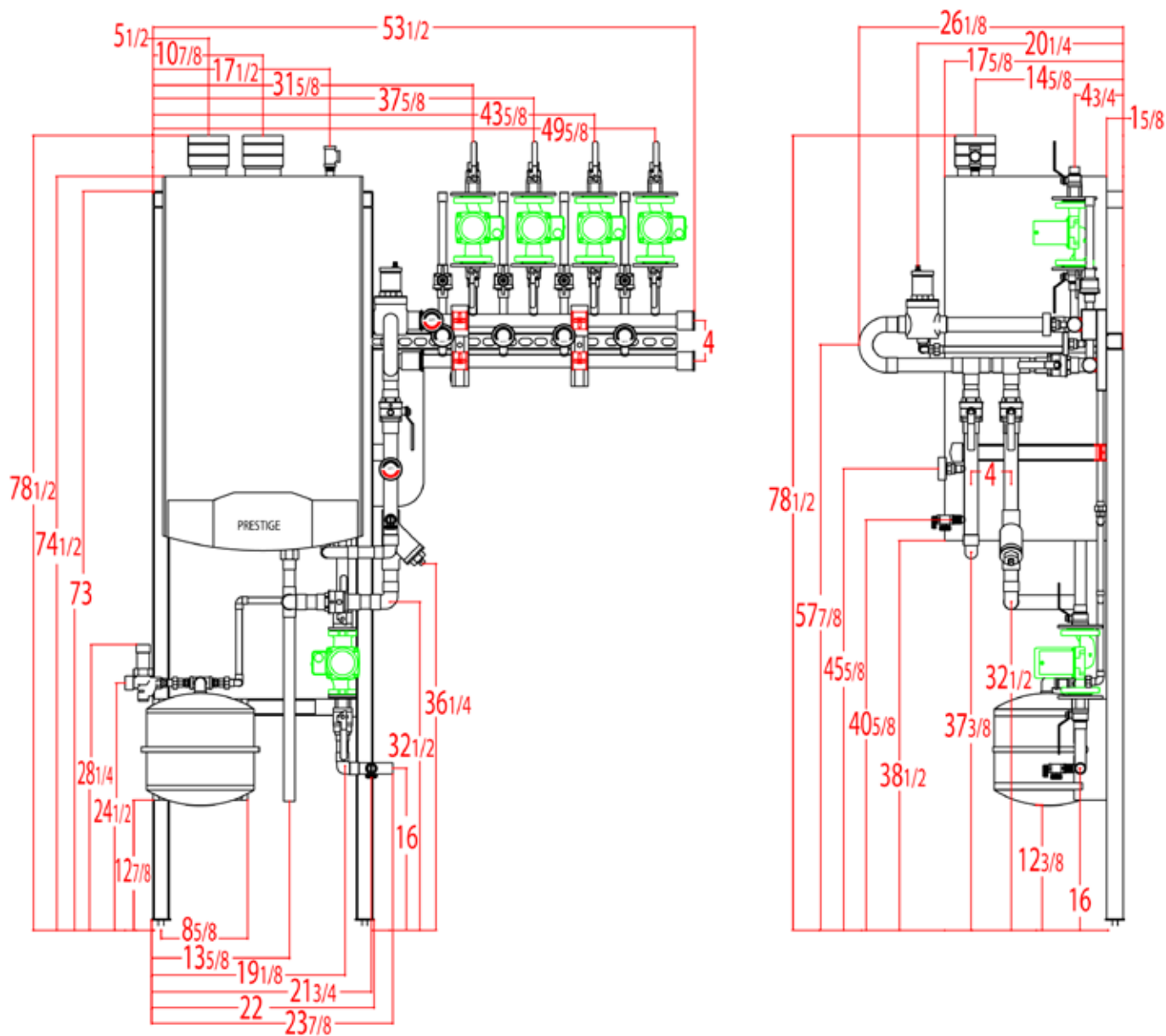
Mixing module with  
 Cash Acme 3-way  
 Manual Valve



Mixing module with  
 Taco 3-way i-Valve

## Triangle Tube Prestige 110® Primary/Secondary Modules

### Boilerpak Dimensions



**Precision** [www.phpinc.us](http://www.phpinc.us)  
**PHP** **Hydronics**™



## **Precision Hydronic Products**

Division of JL industries, inc.

6730 NE 79th Court - Portland, OR 97218

Phone: 503-445-4188; Fax: 503-445-4187

[www.phpinc.us](http://www.phpinc.us)

©2007