

Quick-Start Manual

Munchpak™/Pinnapak™

Primary/Secondary Modules



Pre-assembled boiler piping and zoning packages for the HTP Munchkin® and Peerless Pinnacle boilers

Includes:

- Primary/Secondary piping*
- Zone Pumps or Zone Valves*
- Optional Zone Mixing Modules*
- Optional Indirect Water Heater Pump Kit*

Precision Hydronic Products

Division of JL industries, inc.
6730 NE 79th Court - Portland, OR 97218
Phone: 503-445-4188; Fax: 503-445-4187
www.phpinc.us
©2007

HTP Munchkin®/Peerless Pinnacle® Primary/Secondary Modules

Step 1:

Place and level stand.



Step 2:

Place boiler on stand.

For the T50 M/P, T80 M/P, and 80 M/P, position the boiler forward on the stand and bolt the rear corner support brackets to the holes provided.



Step 3:

Install the half unions on the supply and return connections of the boiler.

Note: the 140 M/P and 199 M/P have wider spacing for the supply/return connections.



Step 4

Attach the primary loop boiler connectors.

Note: Install the return connector (with pump) to the return (left) connection toward the rear of the boiler.



HTP Munchkin®/Peerless Pinnacle® Primary/Secondary Modules

Step 5:

Bolt the primary/secondary assembly to the primary loop connectors using gaskets and 2 pump bolts for each flange.

Note: When using zone valves, a secondary pump will be factory-mounted in the assembly.



Step 6:

Attach the pressure reducing fill valve to the expansion tank.



HTP Munchkin®/Peerless Pinnacle® Primary/Secondary Modules

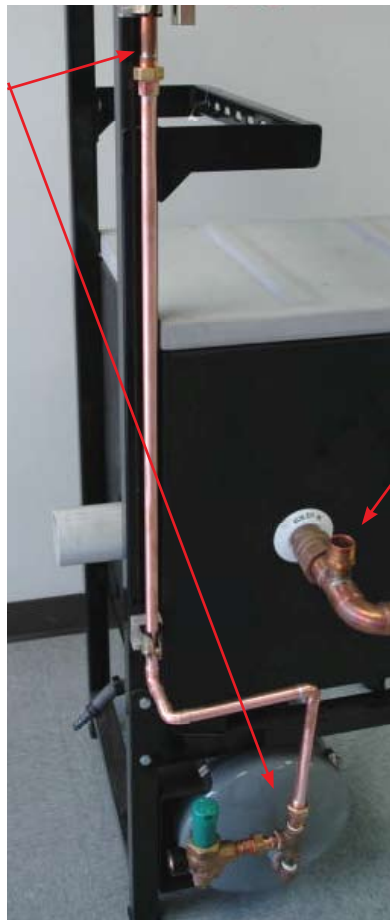
Step 6:

Attach the 2-piece fill water assembly between the air separator and expansion tank.



Step 7:

Tighten the unions to complete the assembly.



Step 8:

If installing the optional DHW indirect pump kit, attach the pump flange fitting to the port provided and attach the pump using the flange gaskets, flanges, and pump bolts.



HTP Munchkin®/Peerless Pinnacle® Primary/Secondary Modules

Step 8:

Slide the zone module onto the horizontal rail. Use the silicone grease provided to lubricate the o-rings then push the Slip-Fit connections together until the two flanges meet. Tighten the strut nuts to secure the zone module.



Step 9:

Install the 2 half-brackets over the Slip-Fit flanges and secure with the stainless steel zip-tie. The zip-tie only needs to be snug in order to hold the brackets in place.



Step 10:

To complete the Munchpak/Pinnapak assembly, install the gauges, zone pumps (if used), and end kits with the purge valves. Secure the Slip-Fit connections as shown above.



HTP Munchkin®/Peerless Pinnacle® Primary/Secondary Modules

The boilerpak secondary zone modules are interchangeable with all boilerpak primary components. The secondary zones are available in assemblies up to 5 zones for zone pump and zone valve modules and in assemblies up to 3 zones for mixing modules. Additional modules may be added to achieve the desired number of zones. Pumping modules are available with either Taco 008-F6 or Grundfos UPS 25-58 FC pumps.



Zone Pumps with
 Grundfos UPS 15-58 FC



Zone Pumps with
 Taco 008-F6



Zone Valves with
 Taco EBV



Mixing module with
 Taco 2-way i-Valve



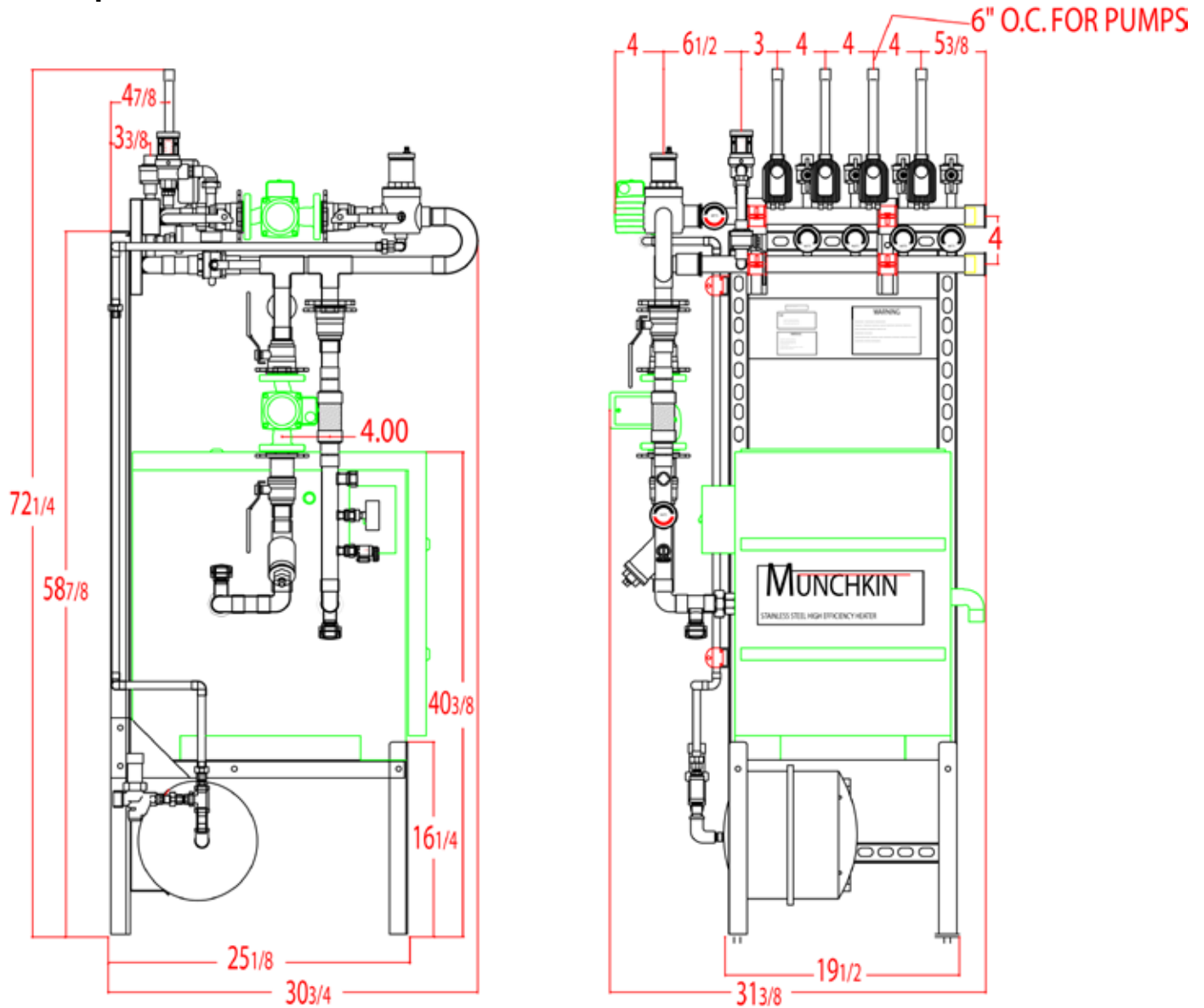
Mixing module with
 Cash Acme 3-way
 Manual Valve



Mixing module with
 Taco 3-way i-Valve

**HTP Munchkin®/Peerless Pinnacle®
 Primary/Secondary Modules**

Boilerpak Dimensions



Precision www.phpinc.us
PHP **Hydronics**™



Precision Hydronic Products

Division of JL industries, inc.

6730 NE 79th Court - Portland, OR 97218

Phone: 503-445-4188; Fax: 503-445-4187

www.phpinc.us

©2007