

Twist, Flow and Go!

TwistFlow™

RADIANT MANIFOLDS

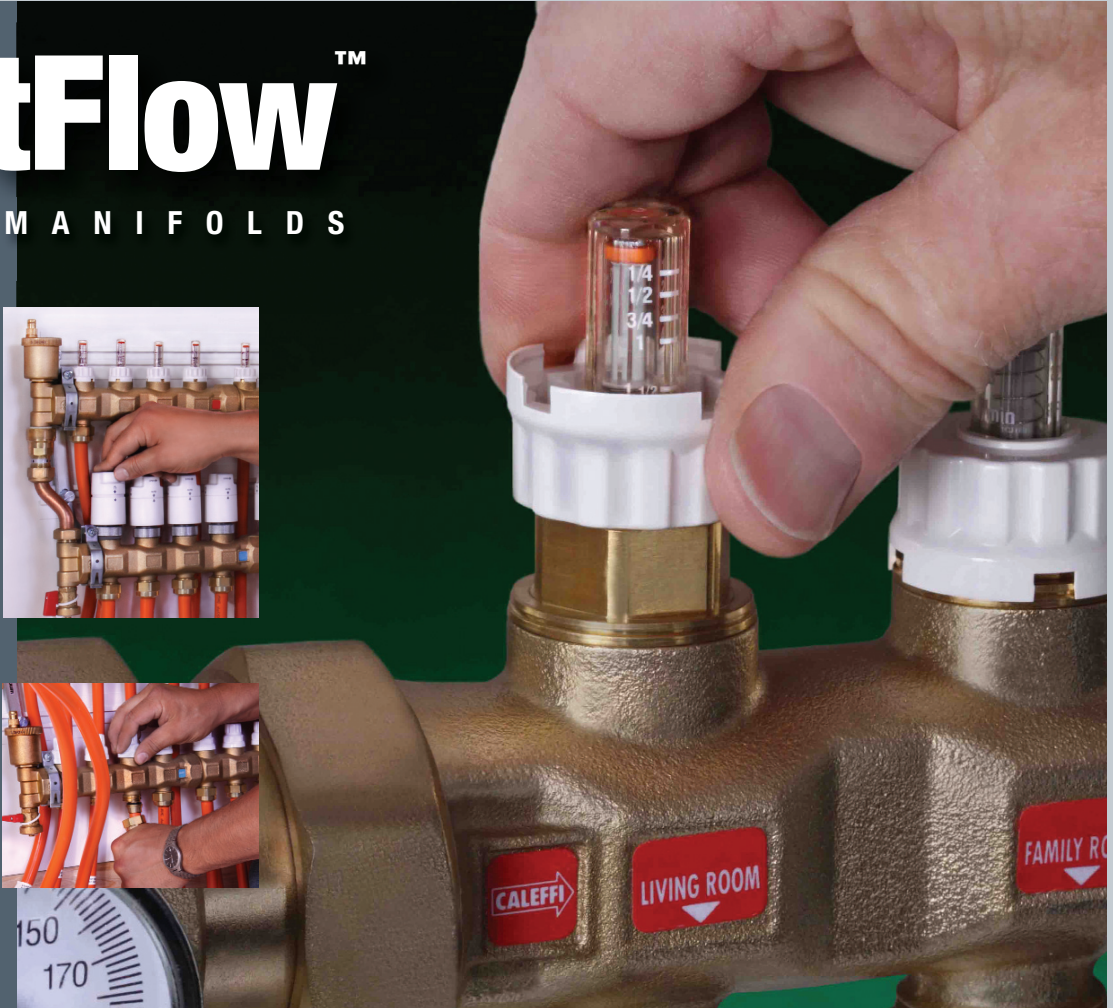
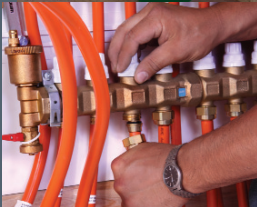
“The TwistFlow manifolds with built-in sight-flow meters and optional snap-on thermometers make it easy for us to check the temperature and adjust for flow the first time with accuracy, resulting in more profitable projects and happier customers.”

*John Palecek,
Energy/Technical Consultant,
Smart Solutions, Inc.,
Kamiah, Idaho*



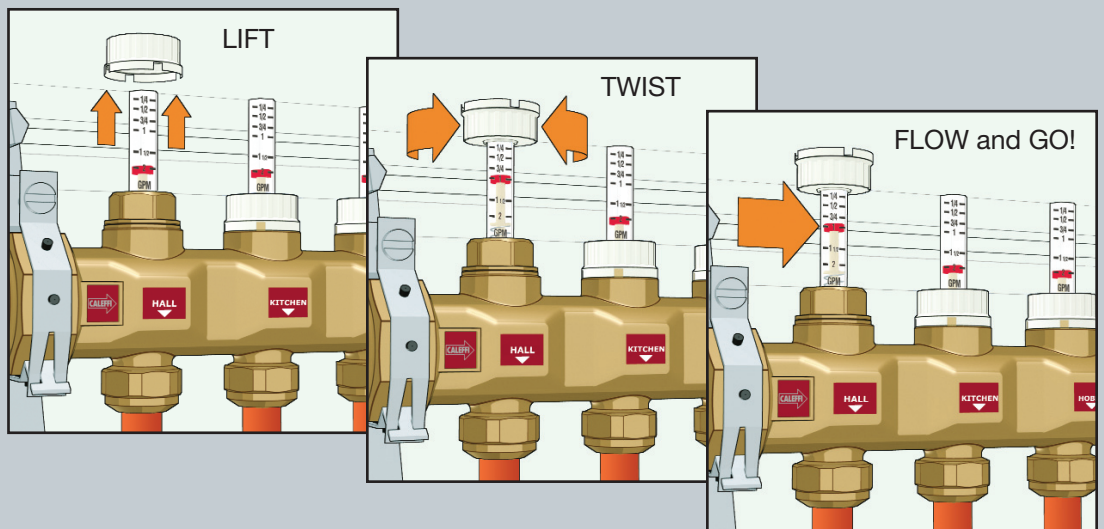
“Easy to adjust flow, balancing between longer and shorter loops off your manifold on system setup. A great innovation!”

*Rich Riddle, Owner,
Riddle Mechanical,
Kittredge, Colorado*



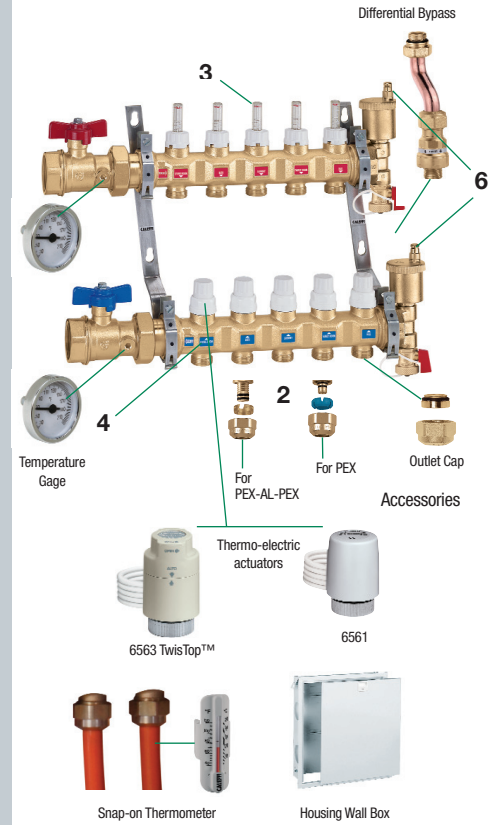
TwistFlow Easy fingertip balancing—

Adjustable balancing valves with 1/4 to 2 gpm flow meter scale. Simply twist the sight-flow meter to adjust and instantly verify circuit flow.



Caleffi TwistFlow Advantages

- **1. Out of the box on to the Wall** — Manifolds are factory pre-assembled and pressure tested.
- **2. Universal compression fittings** — 680 series fittings are compatible with all PEX pipe brands meeting ASTM F876 dimensional standards; 682 series fittings are compatible with all PEX-AL-PEX pipe brands meeting ASTM F1281 dimensional standards.
- **3. Built-in sight-flow meters integrated with adjustable balancing valves:**
 1. Simplifies circuit calibration without cumbersome reference graphs.
 2. Allows accurate 1/4 to 2 gpm flow rate adjustment to each circuit by simply reading the flow rate on the integral graduated scale.
 3. Determine actual btu output per zone with the optional snap-on thermometer.
- **4. One-piece casting design** — Superior leak resistance
- **5. Distinctive curved manifold shape results in:**
 1. PEX nesting for flush in-wall mounting.
 2. Constant cross-sectional area for negligible pressure loss and high flow with less noise and smaller pump requirement compared to straight extruded designs.
- **6. Pre-assembled with Automatic Air Vents** — Air vents have hygroscopic caps that close when water is near the vent preventing water from spitting.
- **7. Complete line of accessories** — Flexible field installation to meet any radiant system need.



TwistFlow— Pre-assembled, Easy to Install and Balance

Feature Comparison

Features	Caleffi TwistFlow™	Uponor TruFLOW™ Jr.	Zurn Accuflow® QHPM-	Viega ProRadiant™	Rehau Pro-Balance®	Watts Radiant CazzBrass™	The Caleffi Advantage
Factory pressure-tested single piece cast brass supply and return manifolds	■	—	—	—	—	—	Exclusive high-quality construction with less potential leak points compared to extruded designs
Built-in Sight Flow Meters integrated with adjustable circuit balancing valves	■	—	—	—	—	—	Allows easy and accurate 1/4 - 2 gpm flow rate adjustment to each circuit by simply reading the flow rate on the integral graduated scale. Simplifies and speeds up circuit calibration without cumbersome reference graphs.
Manifold casting indents and offset brackets	■	—	—	—	—	—	Narrow profile permits in-line 'tubing-to-fitting' runs and allows nesting of PEX for flush mounting inside 2x4 or 2x6 wall cavities.
Universal self-adjusting diameter PEX and anti-galvanic PEX-AL-PEX fittings for all pipe brands	■	NO	NO	NO	NO	NO	Self-adjusting diameters accommodate slight PEX variances from different manufacturers, are corrosion resistant, and have no connection leaks with any ASTM dimensional compliant tubing.
Broad PEX and PEX-AL-PEX piping size compatibility: 5/16" - 3/4"	■	■	—	■	—	—	Provide more PEX sizing flexibility and compatibility with all PEX pipe brands meeting ASTM dimensional standards.
Shutoff Ball Valves with Gage Port	■	Optional	■	—	■	—	For temperature gage. Knowing flow rate and temperature, BTU can be calculated.
Manual open/automatic return for individual circuits with optional Caleffi TwistTop™ actuators	■	NO	NO	NO	NO	NO	Purge and fill each circuit without taking off the actuators by manually opening the return manifold shut-off valve. System commissioning and electrical check is simple and quick. Refer to Caleffi Sell Sheet SS-101.
Optional Differential By-Pass	■	—	■	—	■	—	Maintains constant flow through each circuit as actuators cycle. Simplifies by-pass piping when required.
Pre-assembled standard manifolds complete with automatic air vent and fill/drain valve on supply and return manifolds, adjustable brackets	■	Automatic air vent optional	Automatic air vent optional	—	Automatic air vent optional	—	Easy specification, ordering, and installation with peace-of-mind quality for ultimate customer satisfaction. Speeds installation time and assures a quality system. Automatic air vent closes automatically when water is near the vent.

For detailed specifications, visit us at: www.caleffi.us

Caleffi North America, Inc.
3883 W. Milwaukee Rd., Milwaukee, WI 53208
Tel: 414.238.2360, Fax: 414.238.2366

