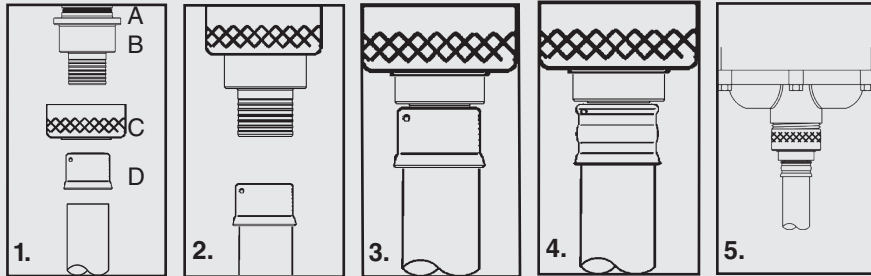
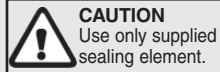


Product Instructions

MANABLOC® PEX Press Supply Adapter Connections

33304, 33305, 33306

THE WATER SUPPLY TO THE MANABLOC SHALL BE TURNED OFF BEFORE ATTEMPTING INSTALLATION OF CRIMP SUPPLY ADAPTERS.



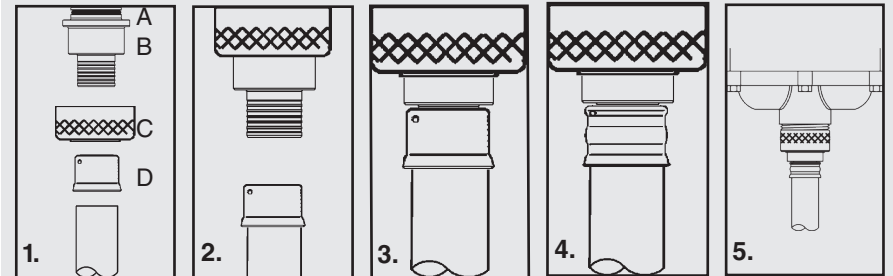
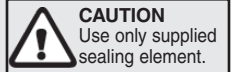
1. Slide a press sleeve (D) 61040 for 3/4" tubing; 61060 for 1" tubing; 61070 for 1-1/4" onto the tubing.
2. Slide the supplied swivel nut (C) onto the fitting (threads of the nut toward the end of the fitting with the sealing element). Nut comes assembled on 1-1/4" PEX Press Supply Adapter .
3. Insert the barbed end of the fitting (B) fully into the end of the tubing as shown.
4. Check full tubing insertion at view hole of sleeve, then press the sleeve with an appropriately sized press tool. DO NOT PRESS TWICE. Refer to the current PureFlow installation guide for additional pressing information.
5. Insuring the sealing element (A) is in place and clean of any dirt or debris, wet sealing element with tap water. Insert fitting into the desired inlet/outlet port until the fitting flange sets flush with the port. Thread the nut onto the MANABLOC inlet/outlet port, hand tighten only. DO NOT OVER TIGHTEN.

Product Instructions

MANABLOC® PEX Press Supply Adapter Connections

33304, 33305, 33306

THE WATER SUPPLY TO THE MANABLOC SHALL BE TURNED OFF BEFORE ATTEMPTING INSTALLATION OF CRIMP SUPPLY ADAPTERS.



1. Slide a press sleeve (D) 61040 for 3/4" tubing; 61060 for 1" tubing; 61070 for 1-1/4" onto the tubing.
2. Slide the supplied swivel nut (C) onto the fitting (threads of the nut toward the end of the fitting with the sealing element). Nut comes assembled on 1-1/4" PEX Press Supply Adapter .
3. Insert the barbed end of the fitting (B) fully into the end of the tubing as shown.
4. Check full tubing insertion at view hole of sleeve, then press the sleeve with an appropriately sized press tool. DO NOT PRESS TWICE. Refer to the current PureFlow installation guide for additional pressing information.
5. Insuring the sealing element (A) is in place and clean of any dirt or debris, wet sealing element with tap water. Insert fitting into the desired inlet/outlet port until the fitting flange sets flush with the port. Thread the nut onto the MANABLOC inlet/outlet port, hand tighten only. DO NOT OVER TIGHTEN.