

SharkBite® Push-Fit Fittings -

A Connection System for Copper, CPVC or PEX Pipe

DESCRIPTION

The SharkBite® push-fit fittings allow the user to connect pipe in seconds with relative ease.

FEATURES AND BENEFITS

Instant push-fit connection for increased ease-of-use:
No soldering, clamps, unions, or glue required.

Fittings certified to 200 PSI and 200°F (93°C):
Proven durability and quality.

Fits copper tubing, and CTS CPVC and PEX:
Connects all three types in any combination.

Integral tube liner for PEX installations:
Integrated design means no loose components, ensures secure, reliable connection.

Design certified and agency listed:
Inspector friendly, peace of mind!

Compact, robust DZR brass body:
Foundation of a strong, corrosion resistant, durable fitting.

Design certified to ANSI/NSF-61 and ASSE 1061 product standard for use in potable water and hydronic heating water distribution:
Quality engineered and manufactured.

Approved to be used underground and behind walls without access panels.

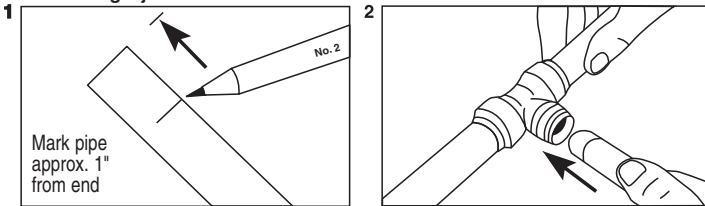
Designed for hydronic heating as well as potable water distribution.

SPECIFICATION

The tube shall be inserted into the SharkBite® push-fit fitting in the first stage through a release collar and then through a stainless steel grab ring. The grab ring has teeth that open out and grip onto the tube. At the second stage the tube shall be pushed through an O-ring protector which aligns the tube. A specially formulated EPDM O-ring shall be compressed between the wall of the fitting and the tube before the end of the tube reaches the tube stop. Only when the tube has passed through the O-ring and reached the tube stop shall a secure joint be created. The fitting shall be a SharkBite® push-fit fitting.

TYPICAL INSTALLATION

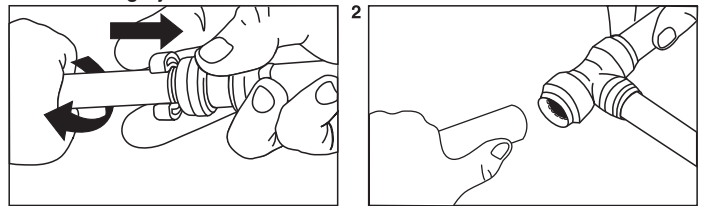
Connecting a joint:



Push the pipe firmly with a twisting action until it clicks.
 Allow 1" clearance between the fitting and the wall for disconnection.

(Please consult with local plumbing codes concerning specific water heater piping requirements.)

Disconnecting a joint:



Push the disconnecting clip against the release collar and pull the pipe with a twisting action.

SPECIFICATION DATA

Performance:

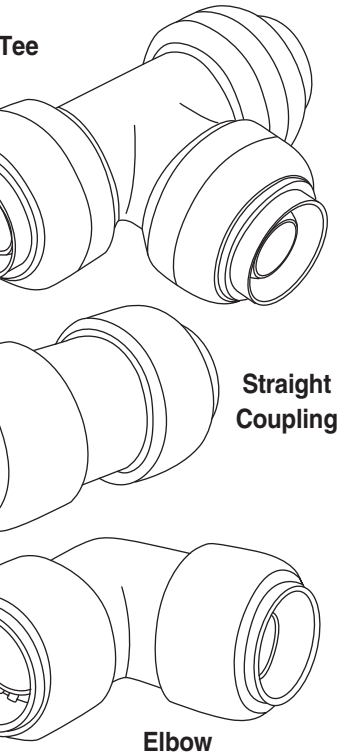
Maximum working pressure 200 psi
 Maximum temperature 200°F (93°C)
 Service Potable water

Materials:

Body DZR brass
 O-ring EPDM
 Grab ring Stainless steel
 Tube support liner Polysulfone

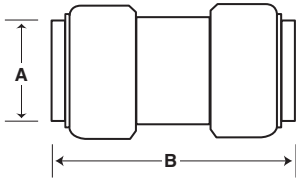
CERTIFICATIONS

The SharkBite® push-fit fittings have been design certified and listed to ASSE 1061/NSF 61. The SharkBite® push-fit fittings are listed by IAPMO and are certified for potable and hydronic heating water distribution (note: Glycol mixture for hydronics is not to exceed 50% concentration). The SharkBite® push-fit fittings have been certified for underground applications and as a manufactured joint without access panels and they meet UPC, IPC and cUPC requirements.



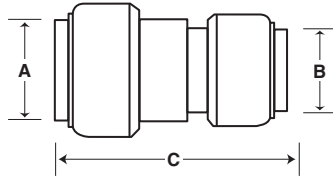
SharkBite® Push-Fit Fittings -

A Connection System for Copper, CPVC or PEX Pipe



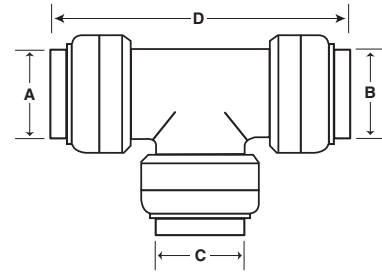
Straight Coupling Dimensions

A	B
3/8" (U006)	1.84"
1/2" (U008)	2"
3/4" (U016)	2.36"
1" (U020)	2.72"



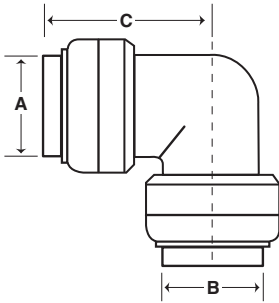
Reducing Coupling Dimensions

A	B	C
3/8"	1/2" (U009)	2.0"
3/4"	1/2" (U058)	2.2"
1"	3/4" (U060)	2.51"



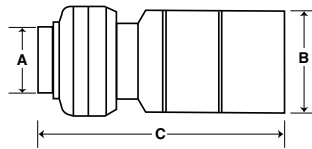
Tee Dimensions

A	B	C	D
3/8"	3/8"	3/8" (U360)	2.77"
1/2"	1/2"	1/2" (U362)	2.72"
1/2"	1/2"	3/8" (U363)	2.85"
3/8"	3/8"	1/2" (U364)	2.77"
3/4"	3/4"	3/4" (U370)	3.24"
1"	1"	1" (U374)	3.84"
3/4"	3/4"	1/2" (U412)	3.04"
1"	1"	3/4" (U416)	3.63"
3/4"	1/2"	3/4" (U444)	3.08"
3/4"	1/2"	1/2" (U454)	2.92"



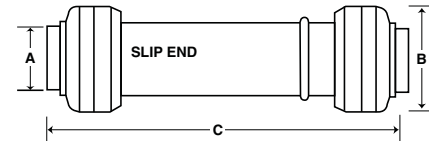
Elbow Dimensions

A	B	C
3/8"	3/8" (U246)	1.28"
1/2"	1/2" (U248)	1.36"
3/4"	3/4" (U256)	1.64"
1"	1" (U260)	1.933"
3/4"	1/2" (U274)	1.373"
1/2"	1/2" MNPT (U280)	1.21"
1/2"	1/2" FNPT (U308)	1.21"



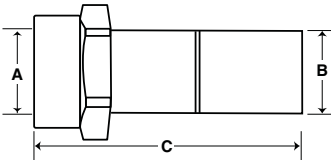
Fitting Reducer Dimensions

A	B	C
3/8"	1/2" (U719)	2.08"
3/8"	3/4" (U721)	2.27"
1/2"	1" (U722)	3"
3/4"	1" (U724)	2.5"



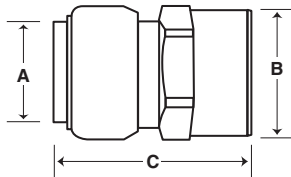
Slip Coupling Dimensions

A	B	C
1/2" (U3008)	1.075"	4.46"
3/4" (U3016)	1.355"	4.42"
1" (U3020)	1.64"	4.5"



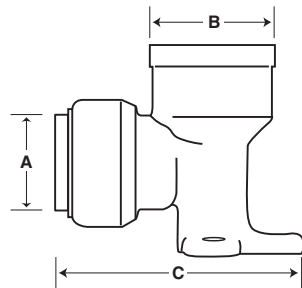
Fitting Adapter Dimensions

A	B	C
3/4" FNPT	3/4" (U766)	2.83"
1" FNPT	1" (U772)	2.83"



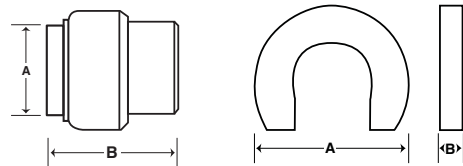
Connector Dimensions

A	B	C
1/2"	3/4" FNPT (U068)	1.75"
3/8"	1/2" FNPT (U070)	1.73"
1/2"	1/2" FNPT (U072)	1.64"
3/4"	3/4" FNPT (U088)	1.88"
1"	1" FNPT (U094)	2.17"
1/2"	3/4" MNPT (U116)	1.75"
3/8"	1/2" MNPT (U118)	1.77"
1/2"	1/2" MNPT (U120)	1.64"
3/4"	3/4" MNPT (U134)	1.88"
1"	1" MNPT (U140)	2.48"
1"	3/4" MNPT (U142)	2.11"



Drop Ear Elbow Dimensions

A	B	C
1/2"	1/2" (U249)	2.20"
3/8"	1/2" FNPT (U332)	1.83"
1/2"	1/2" FNPT (U334)	1.77"
1/2"	1/2" FNPT Hy-Ear (U335)	2.0"
3/4"	3/4" FNPT (U340)	2.5"

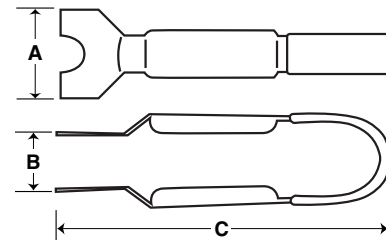


End Stop Dimensions

A	B
3/8" (U512)	1.11"
1/2" (U514)	1.08"
3/4" (U518)	1.32"
1" (U520)	1.52"

Disconnect Clip Dimensions

Size	A	B
3/8" (U708)	1.22"	0.3"
1/2" (U710)	1.22"	0.3"
3/4" (U712)	1.72"	0.4"
1" (U714)	2"	0.4"



Disconnect Tong Dimensions

Fits SharkBite	A	B	C
1/2" (U711)	1.7"	2"	6.5"
3/4" (U713)	1.7"	2"	6.5"
1" (U715)	1.7"	2"	6.5"

Note: Disconnecting clips sold separately. Slip Coupling for use with copper only.