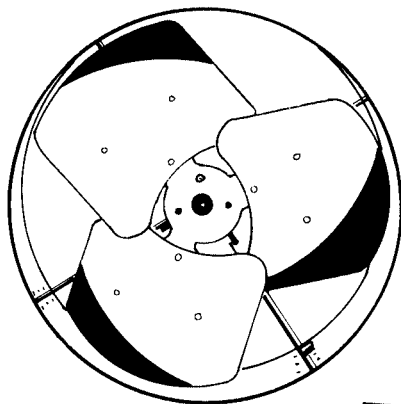


READ AND SAVE THESE INSTRUCTIONS.



**Marley**  
Engineered Products

## MODEL AGV14 GABLE VENTILATOR



---

---

### IMPORTANT SAFETY INSTRUCTIONS

---

---

#### WARNING:

TO REDUCE THE RISK OF FIRE, ELECTRICAL SHOCK OR INJURY TO PERSONS, OBSERVE THE FOLLOWING:

1. Do not use this fan with any Solid-State Speed Control Device.
2. Use this unit only in the manner intended by the manufacturer. If you have questions, contact the manufacturer.
3. Before servicing or cleaning unit, switch power off at service panel and lock service panel to prevent power from being switched on accidentally.
4. Installation work and electrical wiring must be done by qualified person(s) in accordance with all applicable codes and standards, including fire-rated construction.
5. Sufficient air is needed for proper combustion and exhausting of gases through the flue (chimney) of fuel burning equipment to prevent back drafting. Follow the heating equipment manufacturer's guideline and safety standards such as those published by the National Fire Protection Association (NFPA), and the American Society for Heating Refrigeration and Air Conditioning Engineers (ASHRAE), and the local code authorities.
6. "When cutting or drilling into wall or ceiling, Do Not damage electrical wiring or other hidden utilities."
7. CAUTION: This unit has an unguarded impeller. Do not use in locations readily accessible to people or animals.
8. CAUTION: For general ventilation use only! Do not use to exhaust hazardous or explosive materials and vapors.

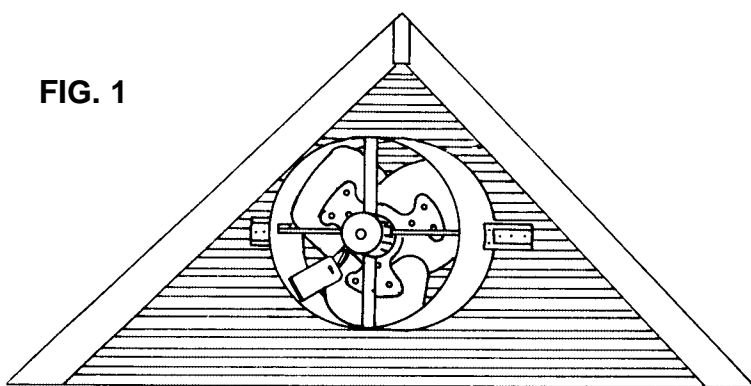
#### GENERAL INFORMATION

1. For a power attic ventilator to effectively cool, it should provide at least ten air changes per hour. To determine the proper CFM rating for a fan that will provide that number of air changes, the total square footage of an attic must be multiplied by .7. This will give the CFM rating for the fan needed for an attic. Example: for a home with 1500 square feet of attic space, the calculation would be as follows:  $1500 \times .7 = 1050$ . A fan with 1050 CFM rating would be needed for such an attic. For dark roofs, 15% should be added to this CFM calculation. If a roof is particularly steep, a slightly higher CFM rating should be sought.
2. The air intake area must be adequate for proper operation of the power attic ventilator. One square foot of free open air inlet per 300 CFM of fan capacity is recommended. See "Attic Intake Area Required" section.
3. Along with the power attic ventilator's summer advantages, it also offers home protection during the winter. In winter months, moist air creeps into the attic from the house below, condensing on the underside of the roof boards, beams and other materials. Excessive moisture can rapidly deteriorate these materials. It can also penetrate insulation, reducing its effectiveness and making the home less energy efficient. An accessory dehumidistat can be used with this power attic ventilator to automatically activate unit in the winter to combat excessive moisture.
4. The power attic ventilator is designed for ventilating attic space. Do not use unit to exhaust dirt, dust, grease or lint laden air.

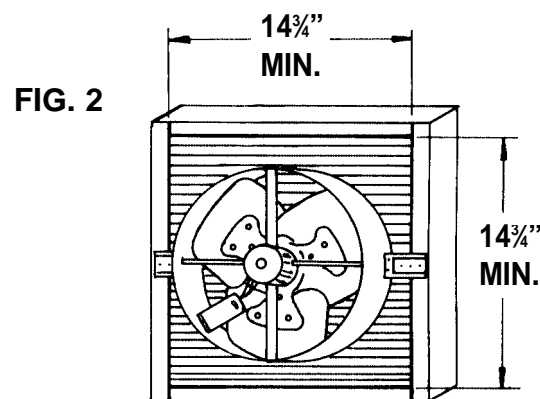
## INSTALLATION

**NOTE:** For maximum operating efficiency, the proper intake air opening must be provided to allow replacement of exhaust air. The best location for air intake is at the opposite end of the attic. See "Attic Intake Air Required" section.

1. This gable ventilator is designed to mount behind existing louvers in your attic. If a louver is not present and one must be installed, it should be mounted in the center of the upper most portion of the gable. The area of the louver should be greater than the outlet area of the ventilator.
2. There are four sets of holes spaced 90° apart in the housing, providing a choice of four depth positions. Reversing the brackets makes eight positions. Select the proper mounting holes to align the bracket and mounting structure on louvers.
3. Figure 1 shows the ventilator mounted directly against a gable louver. If the louver is sufficiently strong, the mounting brackets may be nailed or screwed to it.
4. If mounting the vent directly to the gable louvers is undesirable, a pair of furring strips may be suspended vertically a minimum of 14 3/4 inches apart.
5. Figure 2 shows the ventilator mounted on a rectangular louver.
6. For better performance: Cover any open louvered area around vent with plywood or other suitable material. This will improve the efficiency of the air exchange between the attic and the outside. It will also prevent the thermostat from being directly affected by outside air.



**FIG. 1**



**FIG. 2**

### MINIMUM ATTIC INTAKE AREA REQUIRED

Sufficient intake area must be provided in the attic to assure that the fan will not be overloaded and that it will deliver its rated CFM. This can be accomplished with some type of attic venting such as gable louvers or under-eave vents. The table below shows the minimum intake area needed for each fan installed.

#### MINIMUM ATTIC INTAKE AREA REQUIRED (All Areas Are In Square Feet)

UNRESTRICTED* OPENING REQD.	WOOD LOUVER* OPENING REQD.	METAL LOUVER* OPENING REQD.
3.8	4.8	4.4

\*If openings are covered with 1/2" hardware cloth or large mesh expanded metal increase area by 20%. Double area if fly screen is used.

### SPECIFICATIONS

FAN SIZE	RPM	MOTOR @ 120 VAC 60 HZ		
		HP	AMPS	WATTS
14"	1550	1/11	2.2	175

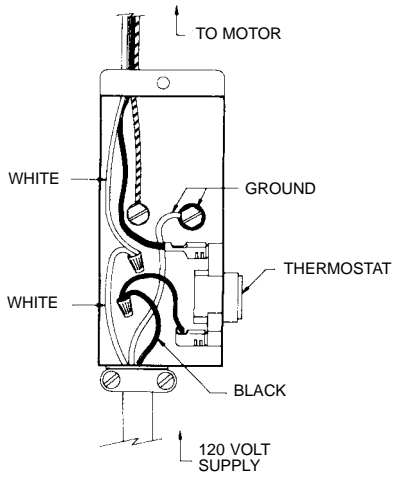
### WIRING INSTALLATION

**WARNING:** To reduce the risk of fire or electrical shock, do not use this fan with any solid state speed control device.

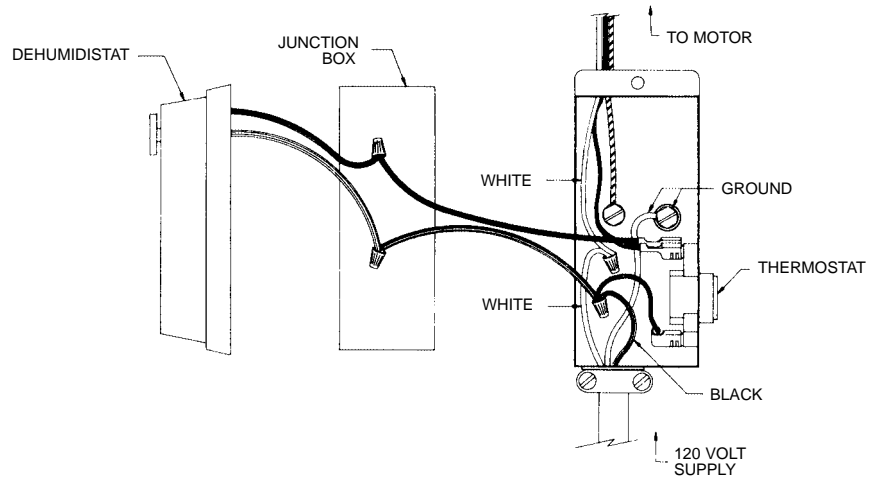
(This fan is designed to run on 120 volts, 60 Hz power only)

1. Wiring of this unit is done inside the attic. Remove cover from thermostat/junction box. Bring the power cable at least 6" into the box. Fasten power cable to box with appropriate connector.

**FIG. 3**



**FIG. 4**



2. For standard installation, connect the two leads in the thermostat/junction box to the two supply leads. Attach ground wire from the supply to the green ground screw in the box. See Fig. 3.
3. See Figure 4 for wiring dehumidistat to ventilator.
4. Replace cover to thermostat/junction box.
5. The ventilator will automatically turn "ON" when the attic temperature rises above 105° F and will turn "OFF" when the temperature drops below 95° F.

**WARNING:** The motor is thermally protected and automatically temperature controlled and may start without warning; therefore, make certain that the power source is disconnected before attempting to service or disassemble any components! If the power disconnect is out of sight, lock it in the open position and tag to prevent application of power.

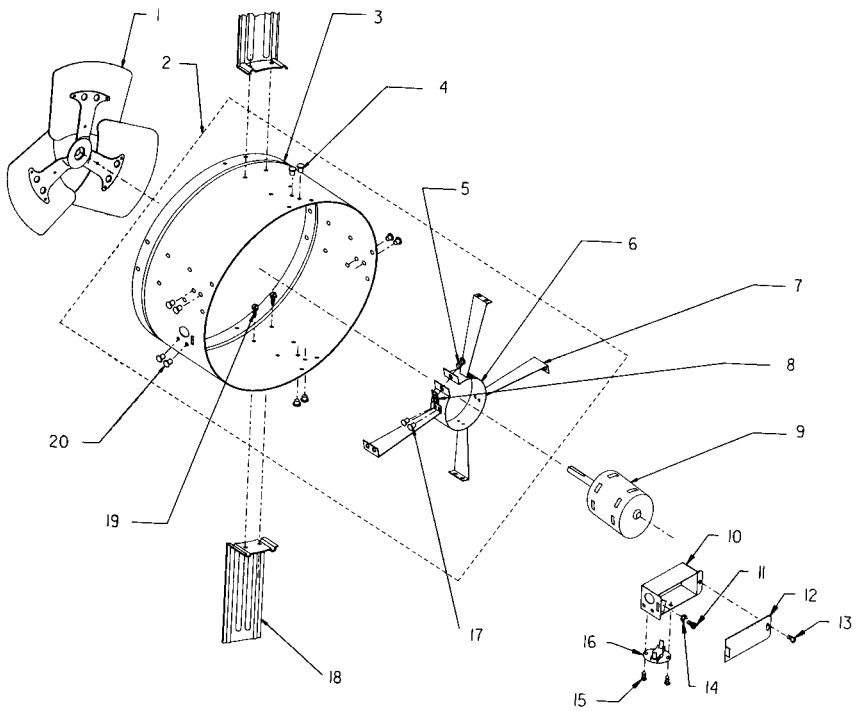
### TROUBLE SHOOTING CHART

WARNING: Items marked with an asterisk (\*), should be performed only by experienced and qualified personnel.

SYMPTOM	POSSIBLE CAUSES	CORRECTIVE ACTION
Excessive noise	<ol style="list-style-type: none"> <li>1. Propeller blade contacting housing</li> <li>2. Foreign material inside housing</li> <li>3. Motor loose</li> <li>4. Motor needs oiling</li> <li>5. Dirt accumulation on propeller, causing imbalance</li> </ol>	<ol style="list-style-type: none"> <li>1. Realign or replace</li> <li>2. Clean</li> <li>3. Secure properly</li> <li>4. See lubrication</li> <li>5. Clean</li> </ol>
Insufficient air flow	<ol style="list-style-type: none"> <li>1. Not enough eave vents to provide "make-up" air</li> <li>2. Clogged screen</li> </ol>	<ol style="list-style-type: none"> <li>1. See Installation</li> <li>2. Clean or replace</li> </ol>
Unit fails to operate	<ol style="list-style-type: none"> <li>1. Blown fuse or open circuit breaker</li> <li>2. Motor</li> <li>3. Thermostat</li> </ol>	<ol style="list-style-type: none"> <li>* 1. Replace fuse or reset circuit breaker</li> <li>* 2. Replace</li> <li>* 3. Replace</li> </ol>

**LUBRICATION:** To prolong the life of the motor, oil motor every six months of use with S.A.E. 20 Motor Oil.

REF NO	DESCRIPTION	QTY.
1	Fan Blade Assembly	1
2	Shroud Assembly	1
3	Shroud	1
4	Pop Rivet 1/8	8
5	Screw, 1/4-20 x 1 1/4	1
6	Motor Band	1
7	Bracket, Motor Mount Assembly	4
8	Nut, Spec 1/4-20	1
9	Motor Shaded Pole, 120V, 1/35 HP	1
10	Thermostat & Junction Box	1
11	Screw, 10-32 x 3/8 Type "F"	1
12	Cover Thermostat & Junction Box	1
13	Screw, 8-32 x 3/8 Type "F"	1
14	Washer, #10 Cup	1
15	Screw, 6-18 x 1/4 Type "B"	2
16	Thermostat Fixed (ON 105 F-OFF 95 F)	1
17	Rivet, 1/8 x 5/32 Steel	8
18	Support Bracket	2
19	Screw, 8-15 x 3/8	4
20	Pop Rivet 1/8	2
21†	Instruction Sheet	1



\* Standard Hardware Item, Available Locally  
+ Not Available As A Replacement Part  
† Item Not Shown

### LIMITED WARRANTY

Dear Customer,

Thank you for your interest in Marley Engineered Products products. We're sure you will enjoy its benefits for many years to come. Please take a minute to fill out the following information and keep it in your permanent records.

Date Purchased \_\_\_\_\_ Date Installed \_\_\_\_\_

Model Number \_\_\_\_\_

#### LIMITED WARRANTY

This Marley Engineered Products product is warranted to be free of defects in material and workmanship for 12 months from date of original purchase.

There is no other warranty, express or implied, except such as is expressly set forth herein. Seller will not be liable for any general, consequential, or incidental damages, including without limitation any damages for loss of use or loss of profits, for any breach of warranty or for negligence. Seller's liability and buyer's exclusive remedy are limited to the repair of defective goods or the shipment of equivalent goods, or the granting of a reasonable allowance on account of any defects, as the seller may elect.

To obtain performance under this warranty, you must:

- Contact the Marley Engineered Products Service Department at 1-800-642-HEAT between the hours of 8:00 a.m. and 5:00 p.m. E.S.T. Monday through Friday.
- Provide the model number of the product, the date of installation, and state the nature of the difficulty being experienced.

- The Marley Engineered Products Service Representative will determine the best way to resolve the difficulty.

Products within warranty which have been installed and returned to the seller for repair will be repaired and returned as used products. Repairs to products outside the warranty period will be subject to labor and parts charges.

Some states have enacted legislation which (a) does not allow the inclusion of limitations on incidental or consequential damages; (b) does not allow limitations on the length of a warranty period; (c) precludes exclusion, during the period of a limited warranty, of any implied warranties of merchantability or fitness for purpose.

To the extent of such provisions being applicable in your state, the limitations in this warranty may not apply.

#### TO ENSURE SAFE OPERATION

- Be sure that this unit is correctly installed and wired by a qualified installer in accordance with the instructions and applicable NEC or equivalent codes.
- Be sure that operating instructions are followed and that moving and heating parts are kept clean and free from obstructions.

Any warranties granted or liabilities assumed hereunder will not apply to goods that have been damaged in transit, altered, repaired, installed or operated otherwise than in conformity with the above requirements for safe operation.

### HOW TO ORDER REPAIR PARTS

In order to obtain any needed repair or replacement parts, warranty service or technical information, please contact Marley Engineered Products Service Center toll-free by calling 1-800-642-HEAT.

When ordering repair parts, always give the information listed as follows:

- The Part Number
- The Model Number
- The Part Description
- Date of Manufacture



**Marley**  
Engineered Products

SPX Corporation  
470 Beauty Spot Rd. East  
Bennettsville, SC 29512 USA